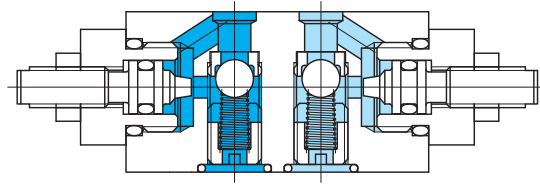
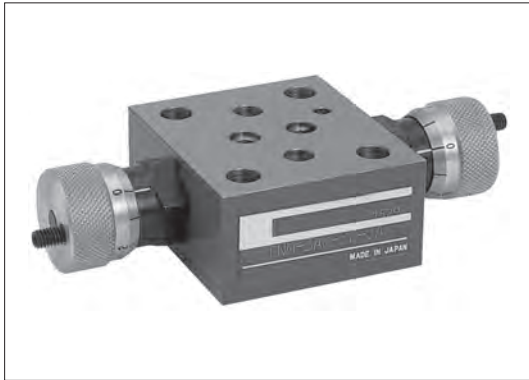


Flui-trol restrictor (with check) valves FN(1)M



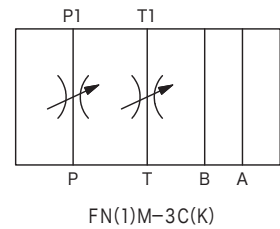
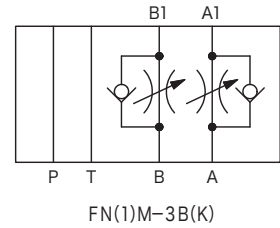
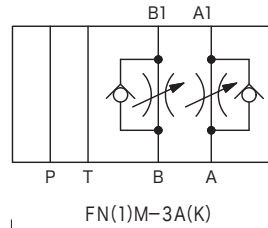
Model Code

(F3)-FN(1)M-3A(K)-30-JA

1 2 3 4 5

- 1 Hydraulic fluid
Omit: mineral oil based fluid, water-glycol based fluid
F3: phosphate ester
- 2 Restrictor
FNM: needle valve with taper (standard)
FN1M: needle valve with notch (fine adjustment)
- 3 Control
A: A, B line restrictor valve (meter-out)
B: A, B line restrictor valve (meter-in)
C: P, T line restrictor valve (meter-in, meter-out)
- 4 Adjuster
Omit: slotted pressure adjustment screw
K: micrometer knob
- 5 Design no.

Functional Symbols

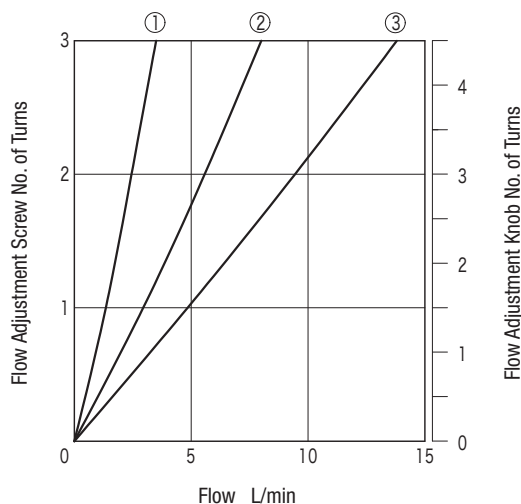


Specifications

Model Code	Max. Working Pressure MPa	Rated Flow L/min	Cracking Pressure MPa	Weight kg
FNM	14	9	0.07	0.4
FN1M		3		

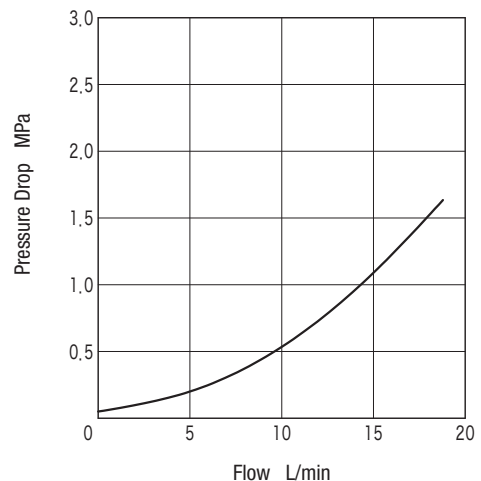
Characteristics Curve (at 20 mm²/s) (typical examples)

Valve Opening-Flow Characteristics (FNM-3)



- (1): Pressure Differential 0.18 MPa
- (2): Pressure Differential 0.7 MPa
- (3): Pressure Differential 1.8 MPa

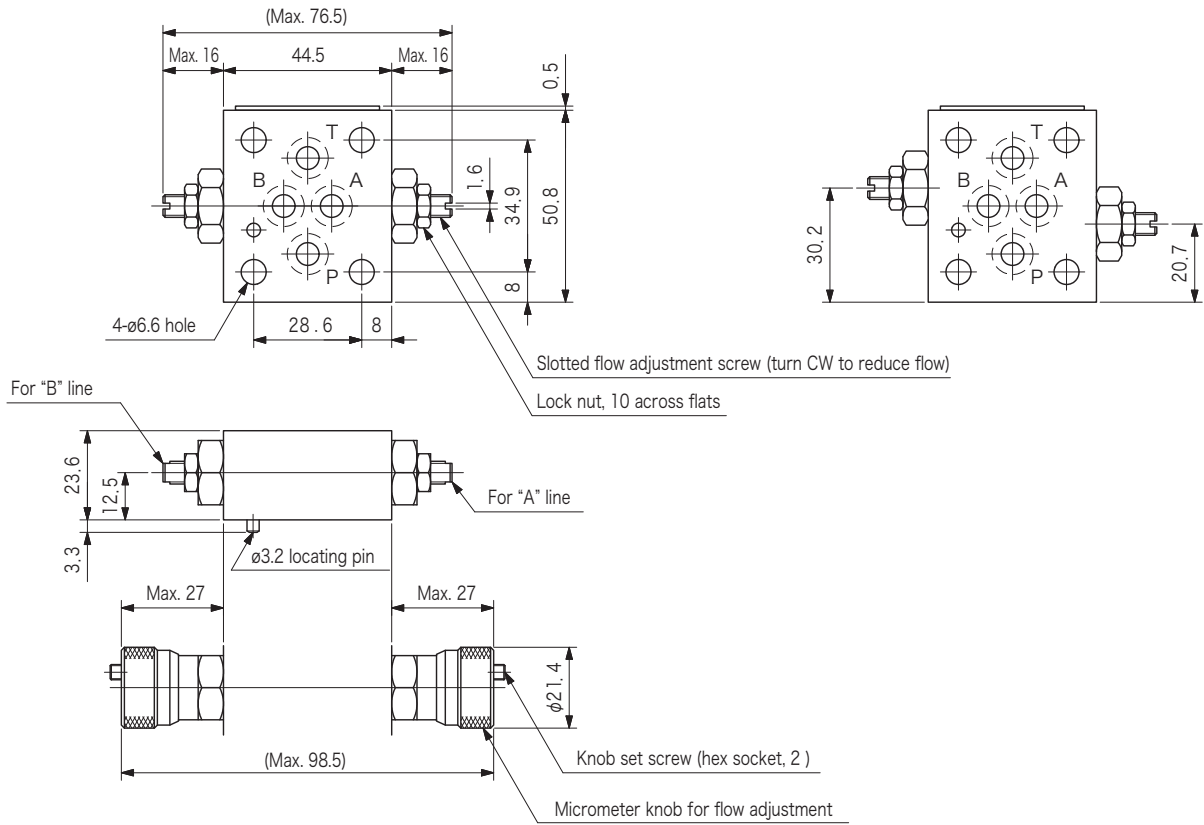
Pressure Drop Characteristics (check valve free flow direction)



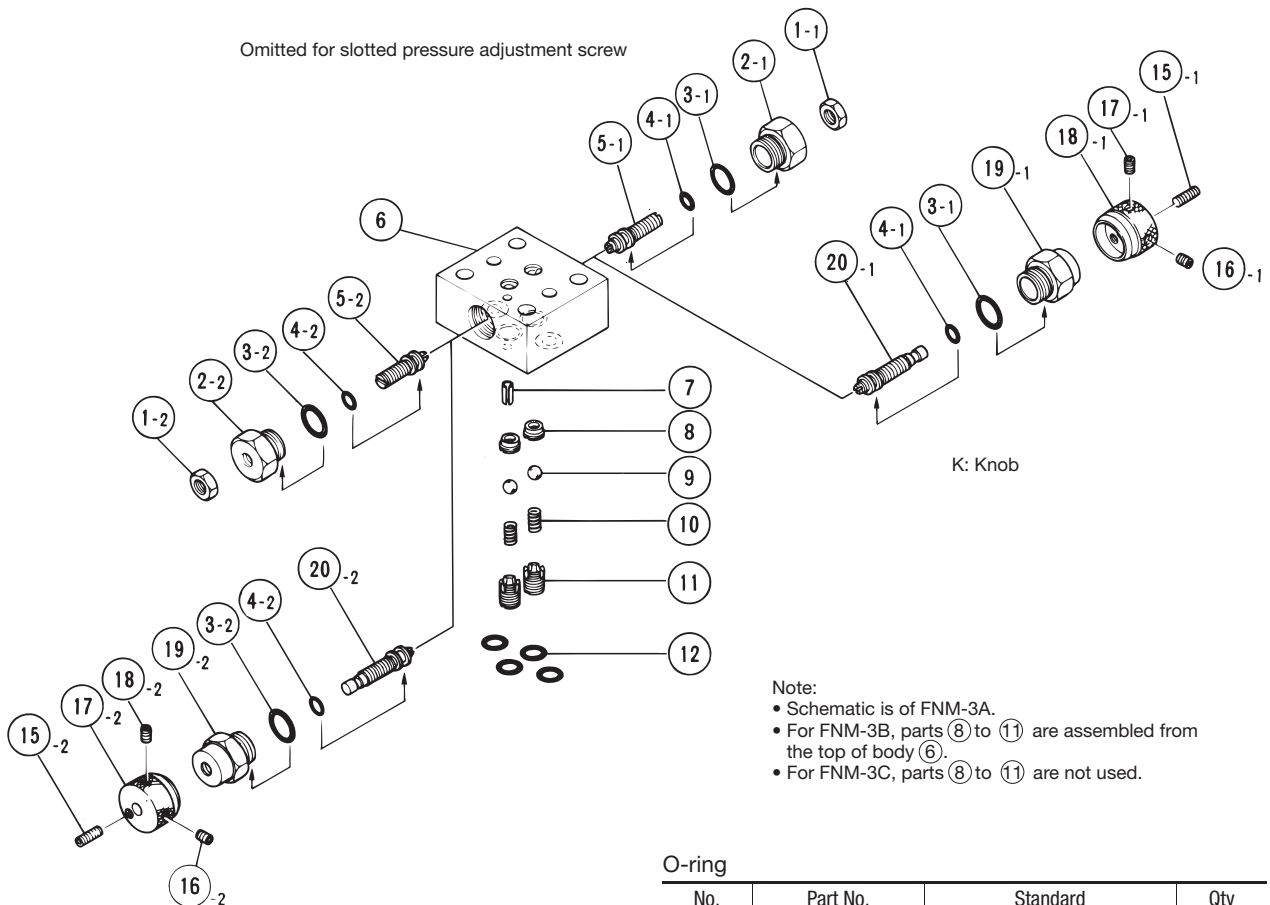
Dimensions

FN(1)M-3A(K)/3B(K)

FN(1)M-3C(K)



Construction



- Note:
- Schematic is of FNM-3A.
 - For FNM-3B, parts (8) to (11) are assembled from the top of body (6).
 - For FNM-3C, parts (8) to (11) are not used.

O-ring

No.	Part No.	Standard	Qty
3	007901317	AS568-013 (NBR, Hs70)	2
4	007900819	AS568-008 (NBR, Hs90)	2
12	007901117	AS568-011 (NBR, Hs70)	4