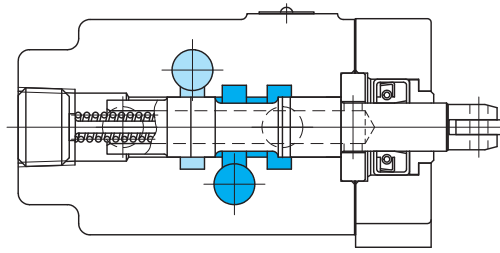


# Mechanically or manually operated directional control valves

## C-552/C-572

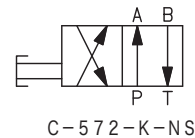
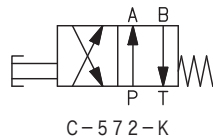
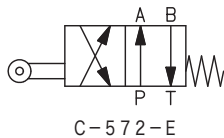
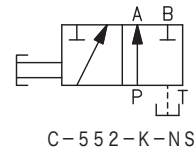
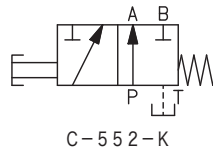
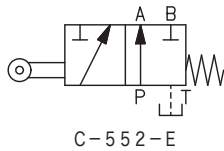


- Two position directional valve for manual or cam operation. Used mainly in pilot circuits.

E  
20-1

Directional Control Valves

### Functional Symbols



### Model Code

(F3)-C-552-K-(NS)-JA-J

1      2      3      4

- Hydraulic fluid  
Omit: mineral oil based fluid, water-glycol based fluid  
F3: Phosphate ester
- Mechanically or manually operated directional control valve (threaded connection)  
C-552: 2 way valve  
C-572: 4 way valve
- Switching method  
E: Mechanically operated  
K: Manually operated (push button)
- Spring (for K type manual operation only)  
Omit: spring offset  
NS: No spring

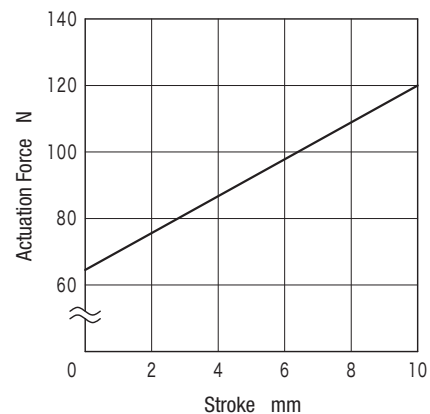
### Notes on Operation

- Cam slope angle should be less than 35°.
- Design system so cam cannot be pushed beyond max. position.
- Connect tank port directly to tank. (Allowable back pressure less than 0.035 MPa.)
- Mounting bolt holes, piping port positions and roller direction can each be rotated in 90° increments.

### Specifications

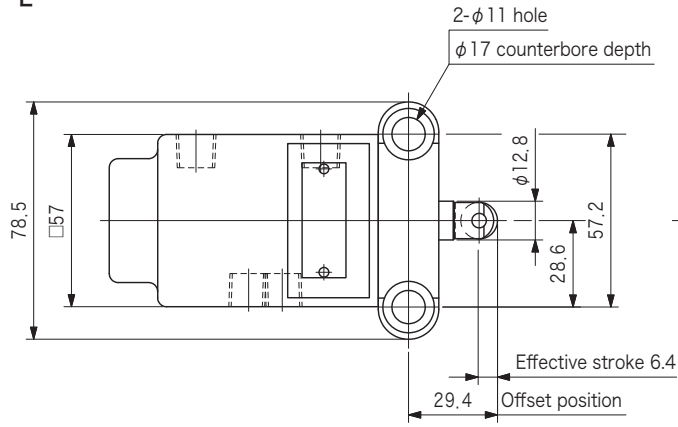
Model Code	Size	Max. Working Pressure MPa	Max. Flow L/min	Actuation Force N	Weight kg
C-552 C-572	02	14	11.5	See graph below	2.3

### Actuation Force

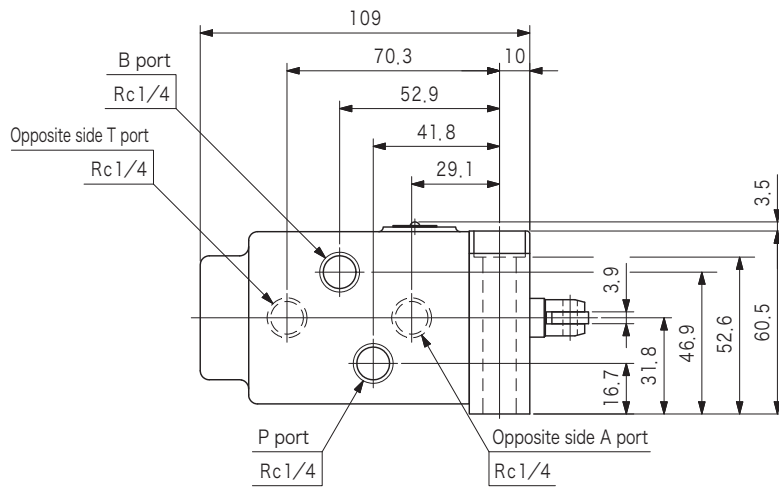
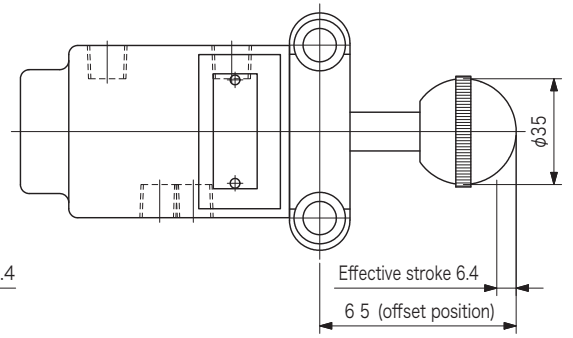


## Dimensions

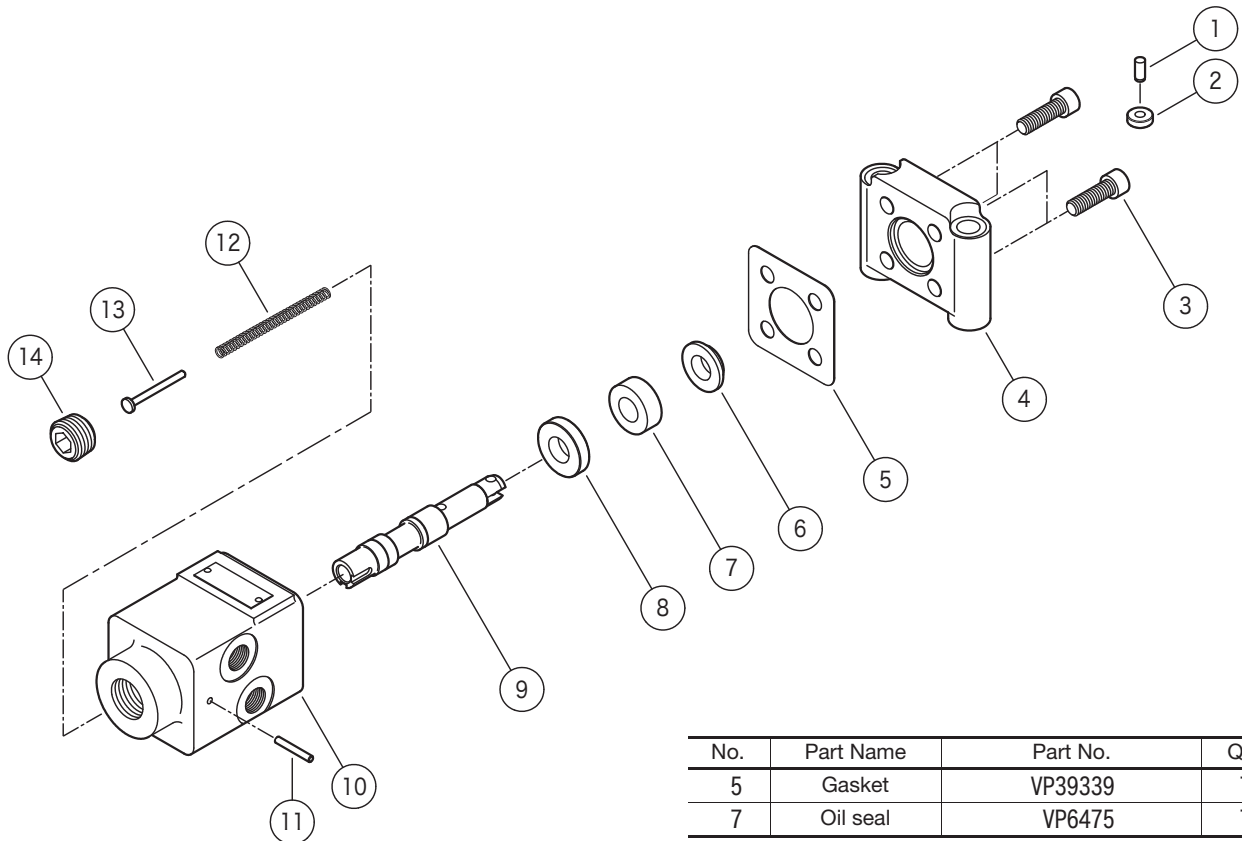
C-5\*2-E



C-5\*2-K



## Construction



No.	Part Name	Part No.	Qty
5	Gasket	VP39339	1
7	Oil seal	VP6475	1

E  
20-2

Directional Control Valves