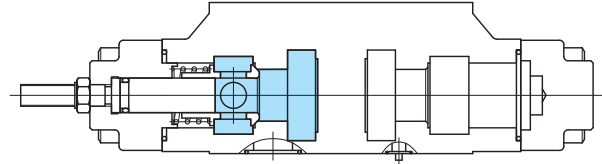
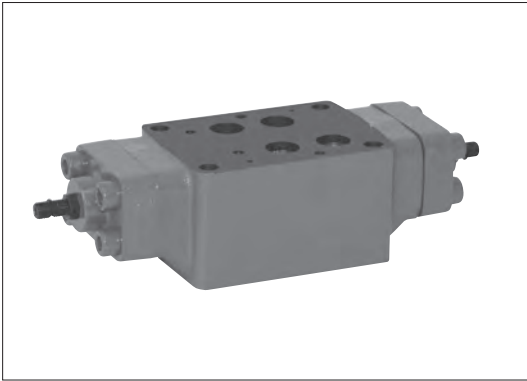


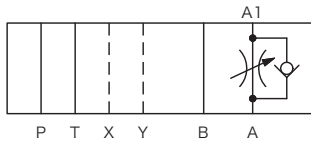
# 叠加型节流阀 TGMFN-7, 50 系列

Flow regulator with check modules

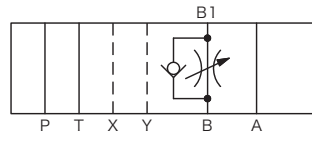


## 液压图形符号

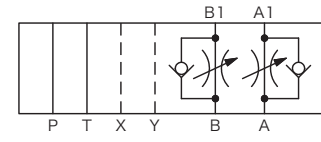
TGMFN-7-X-A2W



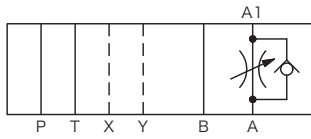
TGMFN-7-X-B2W



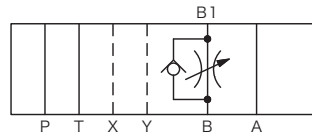
TGMFN-7-X-A2W-B2W



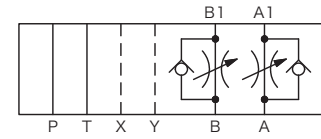
TGMFN-7-Y-A2W



TGMFN-7-Y-B2W



TGMFN-7-Y-A2W-B2W



## 型号

### TGMFN-7-\*\*-\*\*2W-(B2W)-50

1 2 3 4 5 6 7 8 9 10

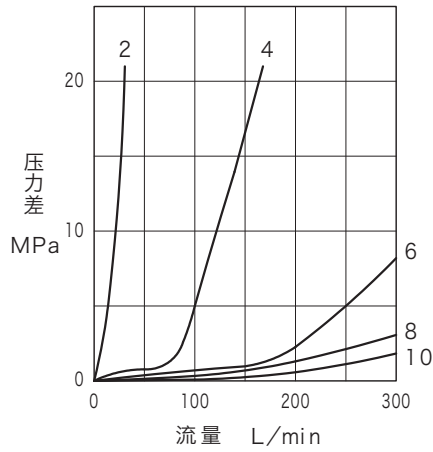
- |  |   |                              |
|--|---|------------------------------|
| <p>1 节流阀</p> <p>2 安装面尺寸<br/>7: ISO 4401-AD-07-4-A</p> <p>3 控制方向<br/>X: 传动器前的流量控制 (入口节流控制)<br/>Y: 传动器后的流量控制 (出口节流控制)</p> <p>4 控制油路<br/>A: A 油路<br/>B: B 油路</p> <p>5 节流的种类<br/>2: 标准型</p> <p>6 调节部形状<br/>W: 内六角调节螺钉型</p> | <p>7 控制油路<br/>B: B 油路</p> <p>8 节流的种类<br/>2: 标准型</p> <p>9 调节部形状<br/>W: 内六角调节螺钉型</p> <p>10 设计编号</p> | <p>} 适用于 A、B 双油路控制型 (双型)</p> |
|--|---|------------------------------|

## 规格

- 最高使用压力.....21 MPa
- 最大流量.....300 L/min
- 单向阀的开启压力.....0.1 MPa

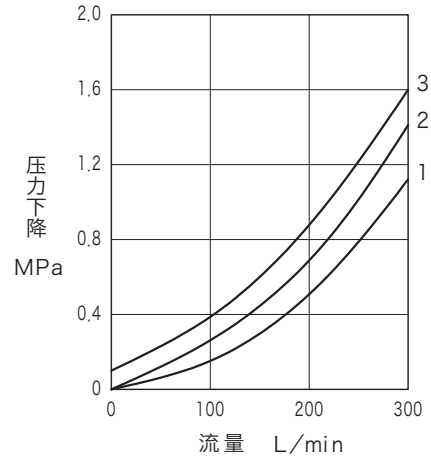
# 特性曲线图 (32mm<sup>2</sup>/s, 40°C时) (代表性示例)

## ■节流特性



· 右侧的添加数字表示从完全关闭状态开始操作时的调节螺钉旋转圈数。

## ■压力下降特性

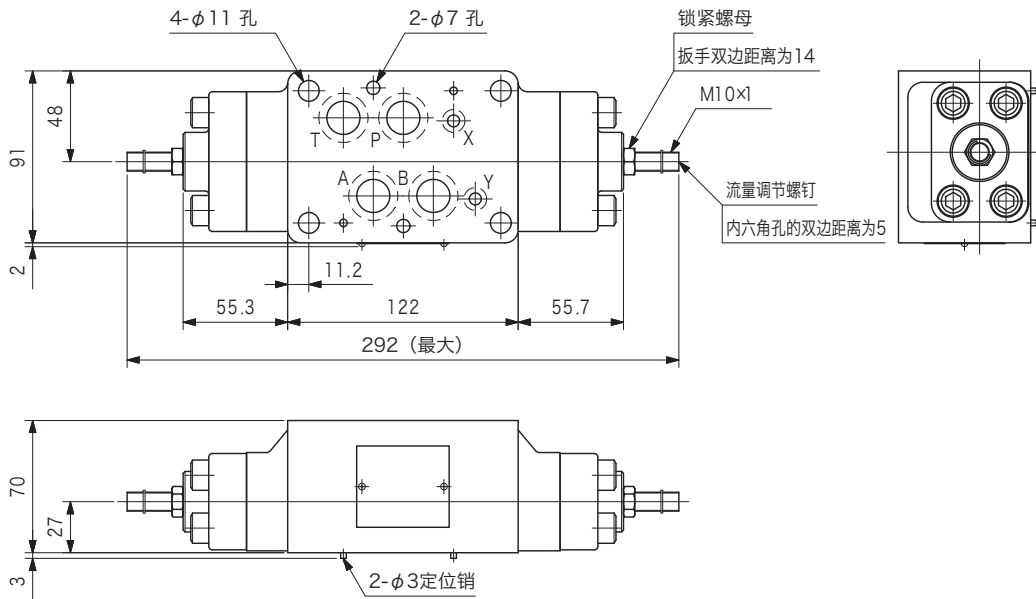


1. P (B) → A (T)、P (A) → B (T) 节流全开
2. P (B) → A (T)、P (A) → B (T) 节流全闭
3. A (P) → T (B)、B (P) → T (A) 节流全开

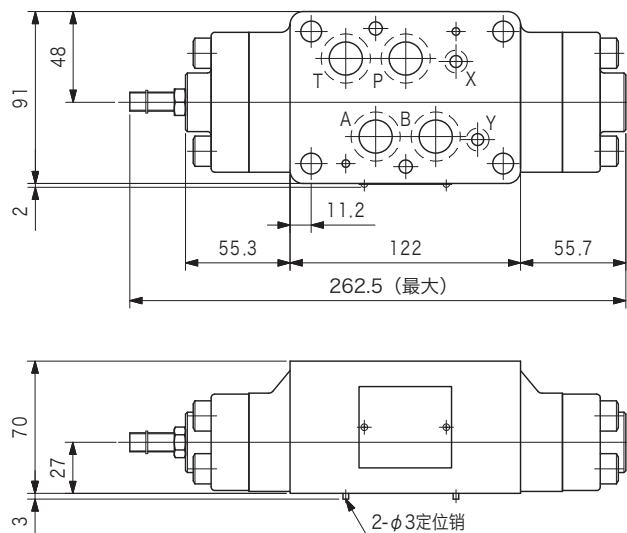
G  
38-2

## 外形尺寸

TGMFN-7-X-A2W-B2W-50 质量: 6.9kg

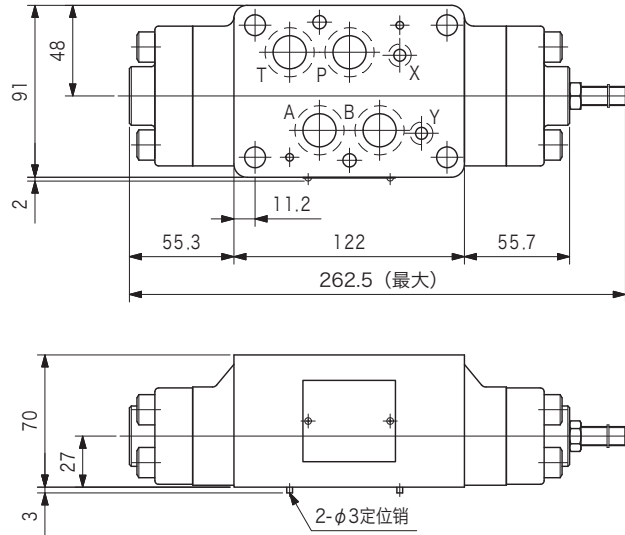


TGMFN-7-X-A2W-50 质量: 6.7kg

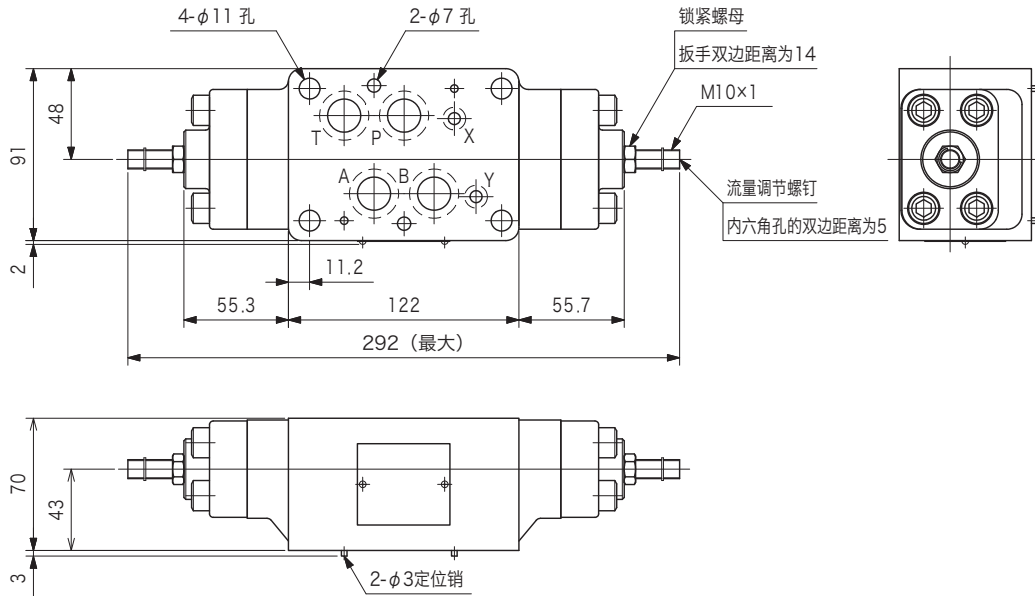


# 外形尺寸

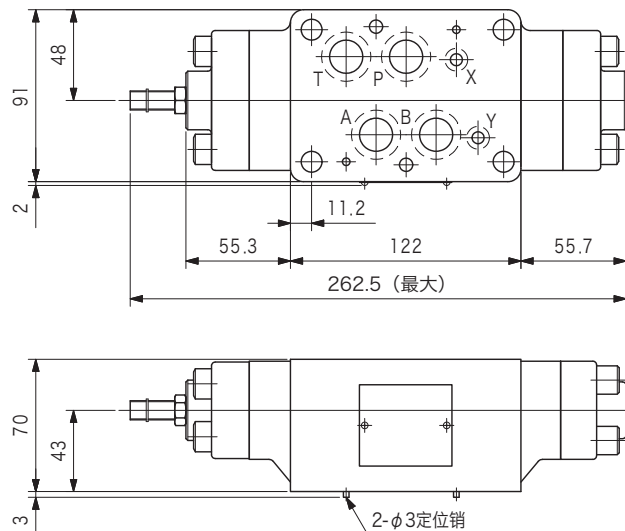
**TGMFN-7-X-B2W-50** 质量: 6.7kg



**TGMFN-7-Y-A2W-B2W-50** 质量: 6.9kg

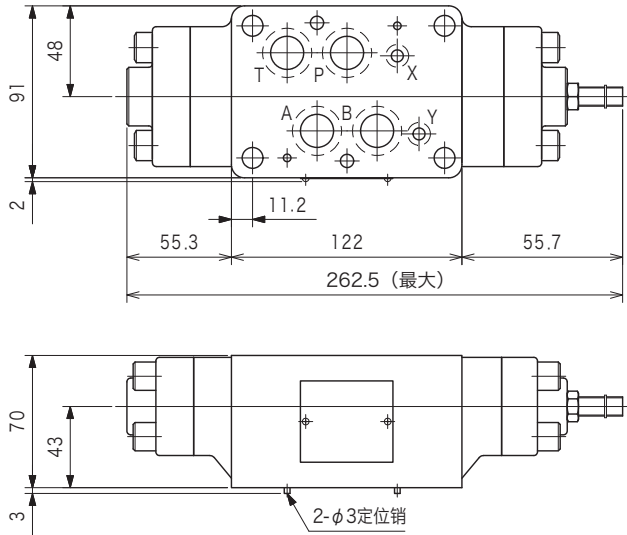


**TGMFN-7-Y-A2W-50** 质量: 6.7kg



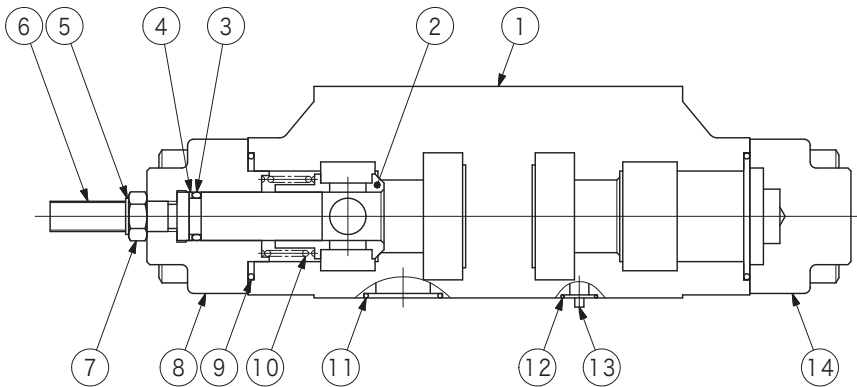
## 外形尺寸

TGMFN-7-Y-B2W-50 质量: 6.7kg



## 内部结构

TGMFN-7-\*-A2W-50



序号	名称	零件编号	标准	数量	
				单型	双型
3	O型圈	-	JIS B 2401 1A-P12	1	2
4	保护圈	-	JIS B 2407 T2-P12	1	2
9	O型圈	007912719	AS568-127 (NBR, Hs90)	2	2
11	O型圈	007911819	AS568-118 (NBR, Hs90)	4	4
12	O型圈	007901319	AS568-013 (NBR, Hs90)	2	2