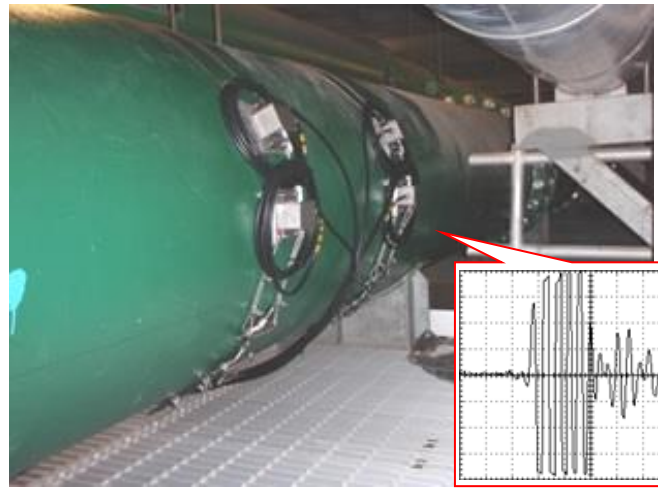


Ultrasonic Flowmeter Application Report 80

- Plant Drain Discharge line -



The UFL-30 series stationary, clamp-on ultrasonic flowmeter with multi-path measurement capability incorporating up to 4 pairs of transducers placed on the outside of pipes provides stable instantaneous flow rate measurements.

At this particular site, the UFL-30 series stationary flowmeter with 2 pairs of sensors measure the flow rate through 600mm diameter pipes, non-intrusively, from the outside with no interference of flow. No other flowmeter cannot measure flow rate without modification to the ductile iron pipe with mortar lining. Only Clamp-on type ultrasonic flowmeter which have higher gain of ultrasonic pulse can communicate through bad sound pass material thick "Mortar".

2 pairs of sensors are located on the pipe outside and provide data on instantaneous flow rate measurement values for the diametrical axis.



By employing the UFL-30 series stationary clamp-on ultrasonic flowmeter in combination with the appropriate sensor from the variety available and/or the system's multi-path measurement capability. You may be able to obtain high stable flow measurements of pipes from 25mm up to 6000mm in nominal diameter under less than ideal conditions.

In addition, the all-in-one UFL-30 main unit boasts two independent analog outputs, 4 varieties of contact outputs for totalizing or warnings, and 2 digital communication ports (RS-232C). The Windows-based graphical and user-friendly PC interface is easy to configure and set up.

[Pipe Specification]

Pipe DN : 600mm (t:10mm)
 Pipe material : Ductile Iron
 Lining : Mortar (t: 8mm)
 Location : Changi, Singapore

[Installation Data]

Main Unit : Stationary Ultrasonic Flowmeter UFL-30
 Transducer : SE044040NC
 Installation : Z method / 2 path

For more detailed information, please contact your local representative.

Representative in your Area