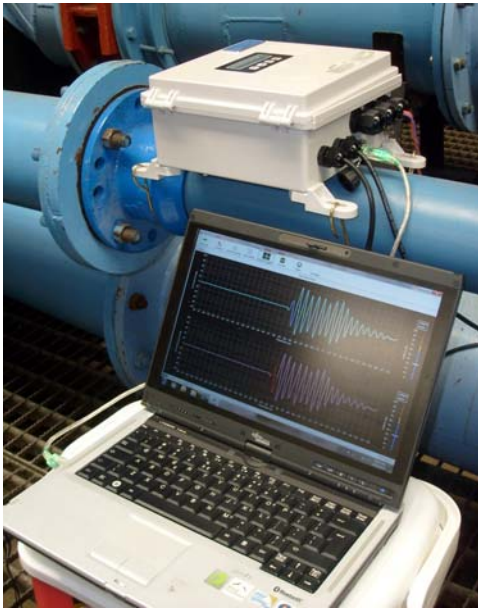


# Ultrasonic Flowmeter Application Report 36

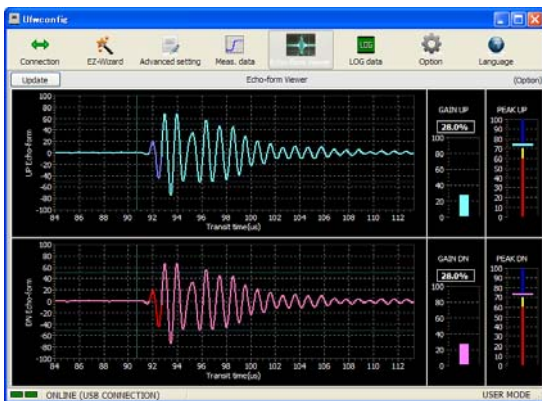
## - Echo monitoring at site -



The “Intelligent digital UFW-100” stationary, clamp-on ultrasonic flowmeter with transducers placed on the outside of pipes provides stable instantaneous flow rate measurements.

At this particular site, the UFW-100 stationary flowmeter measures the flow rate of water inside plant through a 150mm diameter pipe, non-intrusively, from the outside with no interference of flow. The sensors are clamped with integrated mounting fixture by stainless steel band.

To verify whether the installation is OK or not, UFW-100’s Windows-based graphical & user-friendly PC interface “UFW\_config” can show certainty of echo reflections with echo shape and its strength.



In addition, by employing the UFW-100 stationary clamp-on ultrasonic flowmeter in combination with the easy set-up function on above software is easy

to configure through such as “Wizard-parameter input”, “Auto-Logging function”, “Analog input” and / or “Integrated mounting fixture”. Through such easy setup function, you may be able to obtain high accuracy flow measurements of pipes from 25mm up to 600mm in nominal diameter with a  $\pm 30\text{m/s}$  velocity range coverage.

The all-in-one UFW-100 main unit boasts 1 Analog output, 1 Contact output for totalizing or warning, 1 Digital communication port RS-232C as standard, another port for RS-485 (Option) and Analog input (Option).

### [ Pipe Specification ]

Pipe DN : 150mm  
 Pipe material : Carbon Steel  
 Lining : Epoxy

### [ Installation Data ]

Main Unit : Stationary Ultrasonic Flowmeter UFW-100  
 Transducer : SE104720T  
 Installation : V method / 1 path

For more detailed information, please contact your local representative.

Representative in your Area