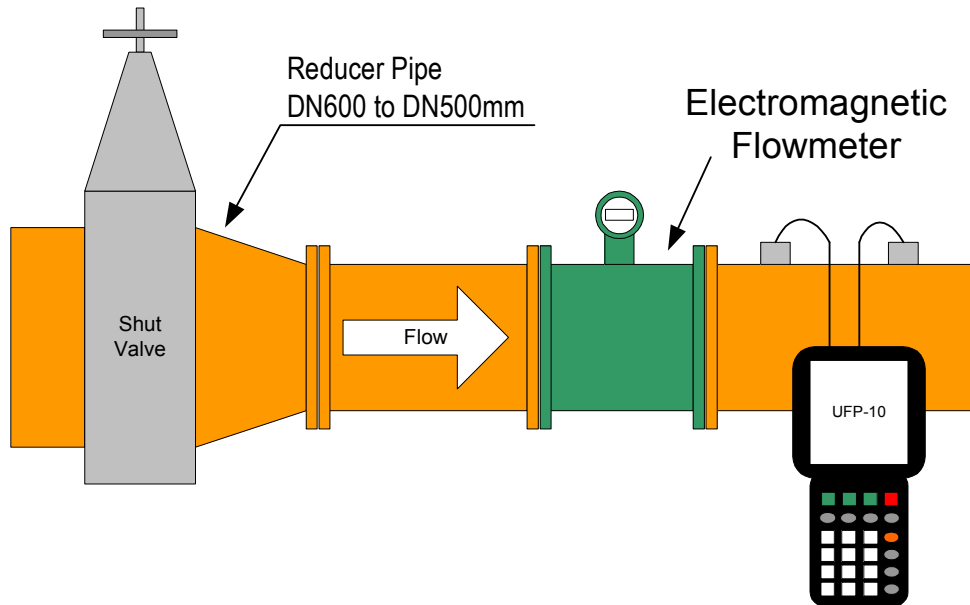


Ultrasonic Flowmeter Application Report 15

- Return Sludge Line Flow Measurement -



The UFP-10 portable, clamp-on ultrasonic flowmeter provides instantaneous flow rate measurements with 1 pair of transducers placed on the outside of pipes.

The measurement unit, transducers, fixtures and accessories fit into a small carrying case, which is easily transportable to work sites. Set up and installation is quick and easy even on the large diameter pipe installations in the valve pit such as shown in the photos above.

At this particular site, the UFP-10 portable flowmeter with 1 pair of sensors measured the return line flow rate of sludge through a 500 mm diameter pipe, non-intrusively, from the outside with no interference of flow.

Although the application involved a nearby upstream flow shut down valve, there was minimal deviation in logged flow rates compared to electromagnetic flowmeters. Integral values shown in the trend graph below exemplify the high degree of measurement stability attainable with the UFP-10.

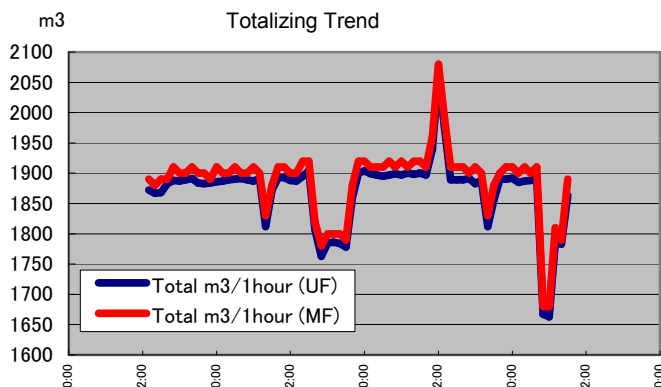
As demonstrated in applications such as this, the portable UFP-10 flowmeter used in combination with a variety of sensors can successfully measure pipes with nominal diameters from 13mm - 5000mm. The main unit's inner memory can provide long-term storage (logging) of instantaneous flow rates and integral data - digital data which can then be transferred to PC's and modified for statistical analysis and other purposes.

[Pipe Specification]

Pipe DN : 533.2mm (t: 11.0mm)
 Pipe material : Ductile cast iron
 Lining : None

[Installation Data]

Main Unit : Portable Ultrasonic Flowmeter UFP-10
 Transducer : Standard sensor
 Installation : V method



For more detailed information, please contact your local representative.

Representative in your Area