

## Magnetic Compass SH-165A2 / SH-165A2-1

### 〈Magnetic Compass Reflector Type SH-165A2〉

Magnetic Compass Reflector Type is designed to reflect the card image of compass bowl in a mirror through reflecting pipe.

The compass card floating in a bowl is lightened by under lamp.

For ease of reading, the reflected image of compass card is magnified by lens in reflecting pipe.

### 〈Magnetic Compass Remote Display Type SH-165A2-1〉

Instead of reflecting pipe, SH-165A2-1 applies Universal Display UD-10 as heading indicator, which contributes to simplifying design and saving space of wheel house.

Complied with IMO requirements, and also with "Wheel Marking".

### Compliance with

- IMO A.382 (X), ISO 25862
- Marine Equipment Directive (MED)
- Japanese Government Certificate No.4294

### Specifications

Standard color	Light gray
Weight	Compass stand 90kg
	Compass bowl 11.3kg

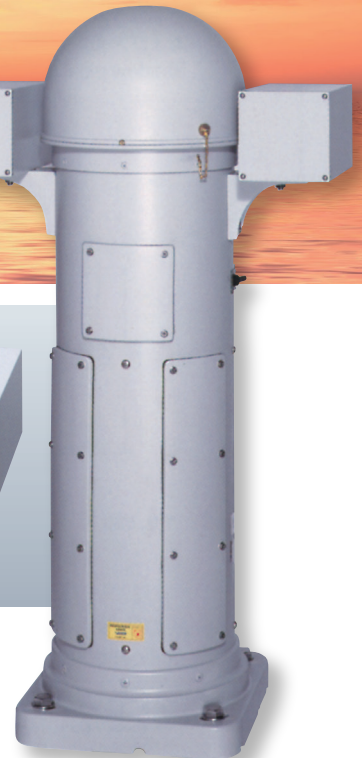
### Heading indication method



SH-165A2  
Reflecting Pipe



SH-165A2-1  
Universal Display



# Magnetic Compass SH-165A2 / SH-165A2-1

## Component

Compass bowl (HB-165A-5)	1	Diameter of card 165 mm
Compass stand	1	
Helmet	1	
Reflecting pipe (SH-165A2 only)	1	Standard length 500, 630, 760, 890
UD-10 (SH-165A2-1 only)		
Shadow pin	1 set	2 pieces and adapter
Correcting tool	1 set	• Correcting magnet 16 pieces in case
		• Quadrantal corrector 12 sheets in case
		• Flinder's bar 5 pieces in case

## Spare parts (in case)

Electric bulb DC24 V 40 W	5	1 in use
---------------------------	---	----------

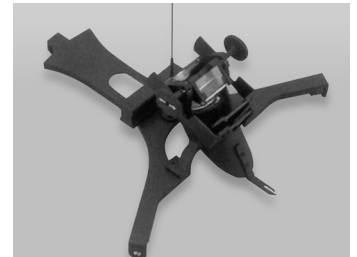
## Options

● Control panel (Wall mount type or flush type)

● Azimuth circle



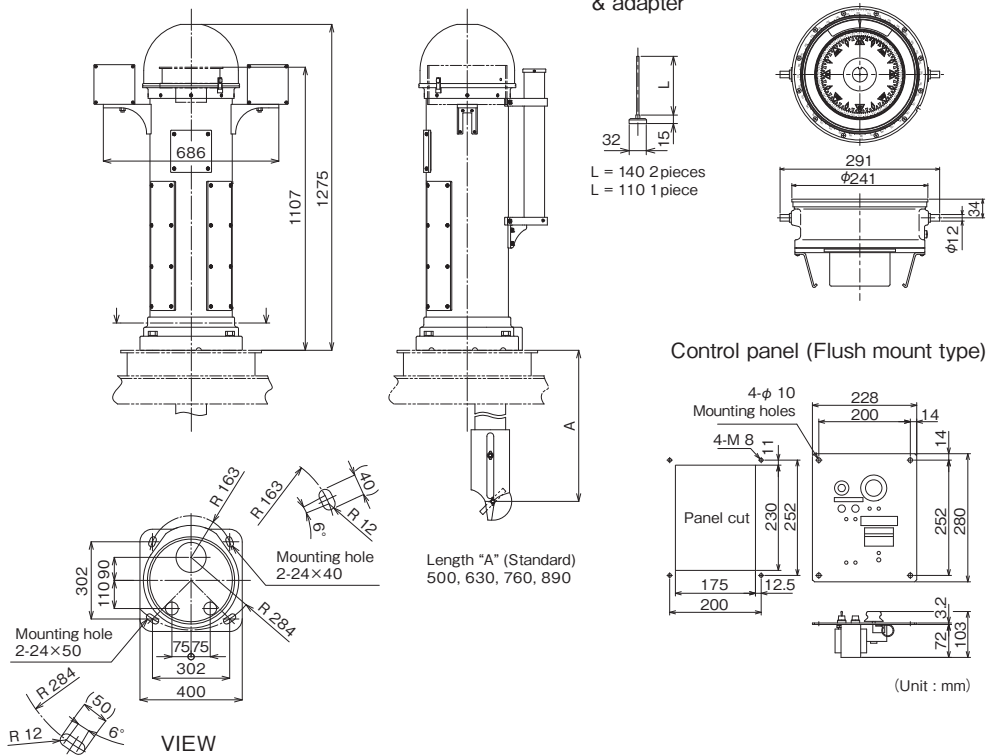
● Azimuth mirror



● Course magnifier



## Dimensions (SH-165A2)



Design and specifications are subject to change without prior notice, and without any obligation on the part of the manufacturer.



**CAUTION**

Before operating this equipment, you should first thoroughly read the operator's manual.

# TOKYO KEIKI

**TOKYO KEIKI INC.**

**Marine Systems Company**

Head Office

2-16-46, Minami-Kamata, Ohta-ku, Tokyo  
144-8551 JAPAN

Tel. +81-3-3737-8611

Fax. +81-3-3737-8663

TOKYO KEIKI (SHANGHAI) CO., LTD.

C-1407, Orient International Plaza,  
No.85 Lou Shan Guan Rd., Shanghai 200336. CHINA

Tel. +86-21-3223-1252

Fax. +86-21-6278-7667

TOKYO KEIKI U.S.A., INC.

3452 E. Foothill Blvd. Suite 420 Pasadena,  
CA 91107 U.S.A.

Tel. +1-626-403-1500

Fax. +1-626-403-7400

Singapore Branch

No.2 Jalan Rajah #07-26/28,  
Golden Wall Flatted Factory, Singapore 329134

Tel. +65-6254-1877

Fax. +65-6254-1745